



PORTOS TR7
spółka z ograniczoną odpowiedzialnością
spółka komandytowa
ul. Złota 71
62 - 800 Kalisz
tel. 62 / 768 40 00
sekretariat@portosrolety.pl
www.portosrolety.pl

User's manual of an A-OK wind sensor

The operating
frequency of the receiver
is 433MHz

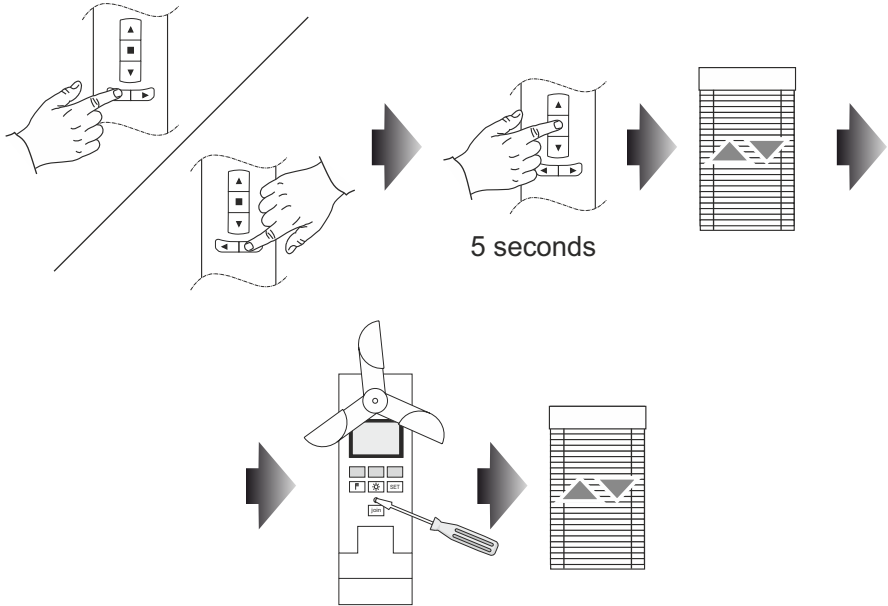


Transmission power: ERP<10 mW



1. Programming a wind sensor for proper receiver configuration:

1. On the already programmed remote control, choose the channel assigned to the receiver that is to be configured.
2. Press and hold the 'stop' button for 5 seconds on the remote control - the UP/DOWN motor movement will confirm successful performance of the operation.
3. Press the 'join' button on the wind sensor - the UP/DOWN motor movement will confirm successful performance of the operation.



2. Setting up the sensor sensitivity levels:

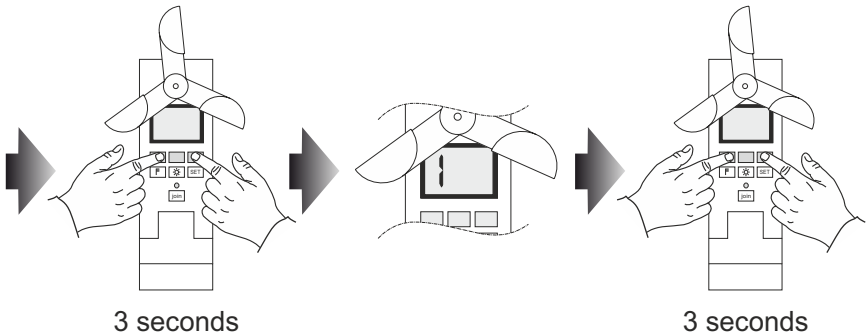
1. On the already programmed remote control, choose the channel assigned to the receiver that is to be configured.
2. Press and hold the 'stop' button for 5 seconds on the remote control - the UP/DOWN motor movement will confirm successful performance of the operation.
3. Press the 'join' button on the wind sensor - the UP/DOWN motor movement will confirm successful performance of the operation.
 - Pressing buttons with wind or sun symbols will change the settings of a given sensor by one level
 - 0 Level means that a given sensor is on

Table of levels and speed of wind

Level of sensitivity	1	2	3	4	5	6	7	8	9
Speed of wind	10,8 km/h	18 km/h	25,2 km/h	32,4 km/h	39,6 km/h	50,4 km/h	72 km/h	111,6 km/h	208,8 km/h

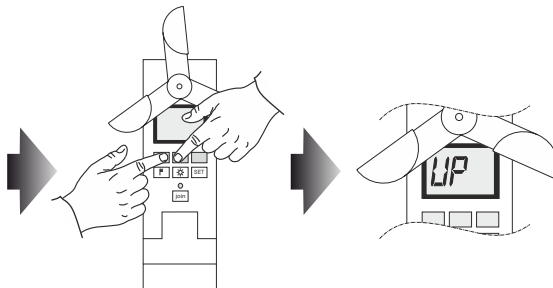
3. Test mode:

1. On the sensor, press and hold simultaneously for 3 seconds a button with the wind symbol and the SET button, a number will be blinking on the display screen. This number will represent the current wind level.
2. If the test mode is on, time needed for the activation of sensors is shortened.
3. To go back from the test mode, press and hold for 3 seconds the wind and the SET buttons again or wait for 3 minutes - the test mode will switch off automatically.



4. Reversing the operating directions:

1. Press the wind and sun symbol button simultaneously. The screen will display UP or DN message.





**WARNING - FOR THE SAFETY OF PEOPLE, IT IS IMPORTANT TO
FOLLOW THESE USER'S INTRUCTIONS.
KEEP THESE USER'S MANUAL AT ALL TIMES.**



PORTOS TR7

spółka z ograniczoną odpowiedzialnością s. k.

ul. Złota 71

62-800 Kalisz

tel 62 768 40 11

E-mail: sekretariat@portosrolety.pl

www.portosrolety.pl