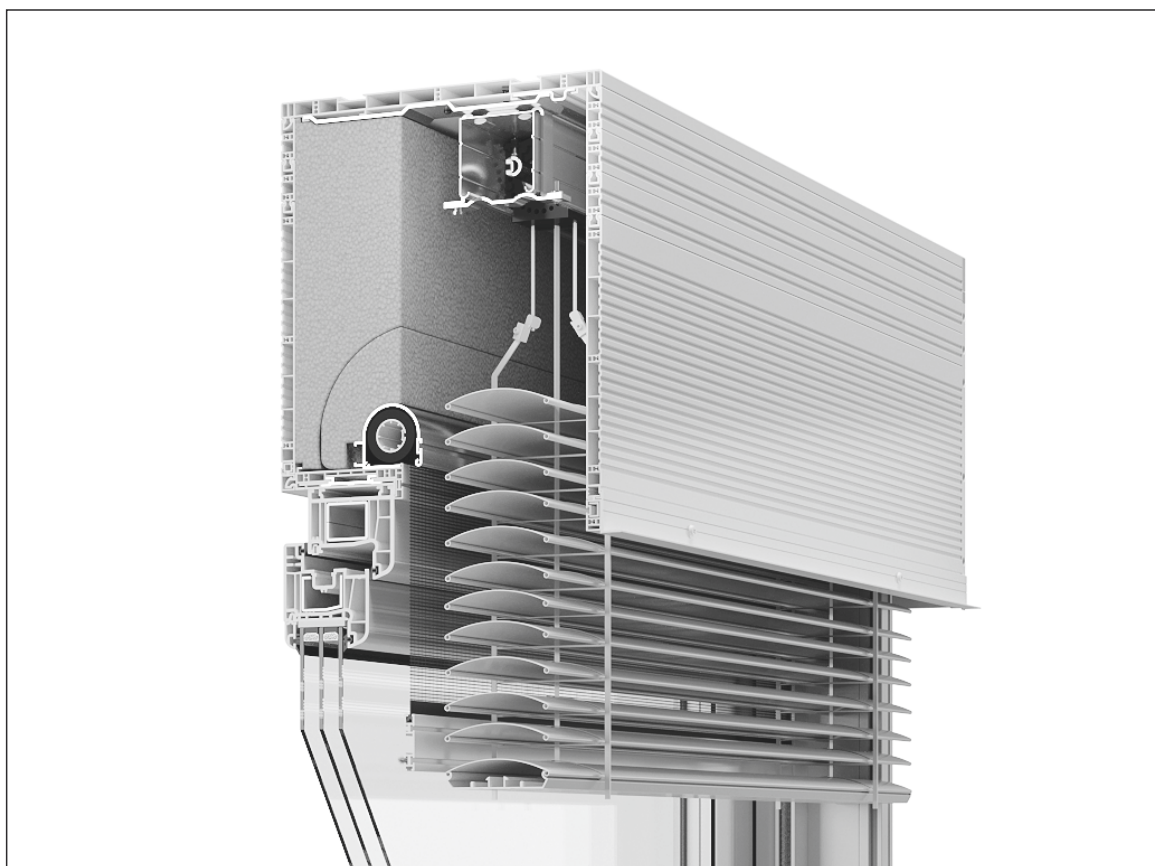




INSTRUCTIONS FOR INSTALLATION AND OPERATION OF TOP-MOUNTED ROLLER SHUTTERS TP1000K[®]-ZF



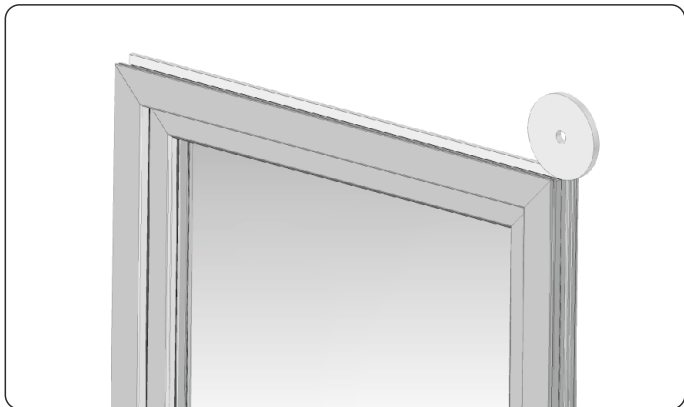
Before installing the roller shutter, read the following instructions.

During transportation and storage, the roller shutter should lie horizontally in a place protected from damage to the box. The roller shutter should not be placed on the side wall.

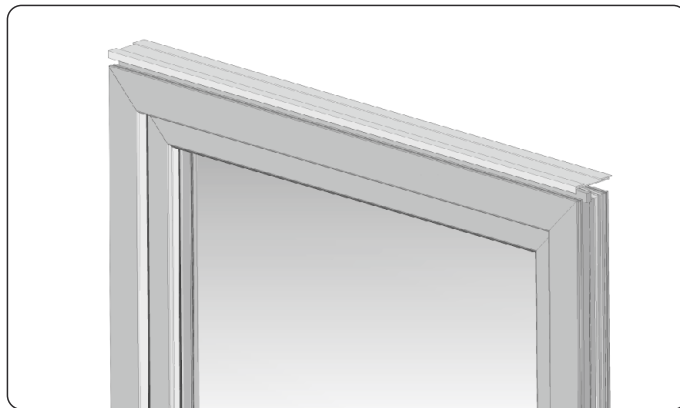
Any modifications or changes to the design of the roller shutter can only be made after consultation with the manufacturer.

Roller shutters should be installed on an even surface.

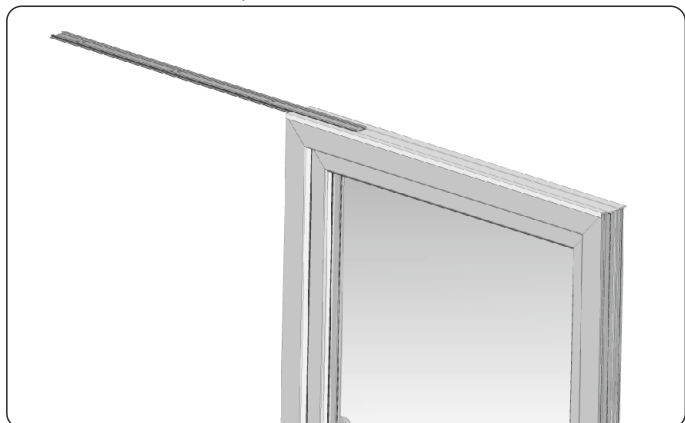
Directly before installation, unpack the roller shutter and check if there are all components necessary for its installation.



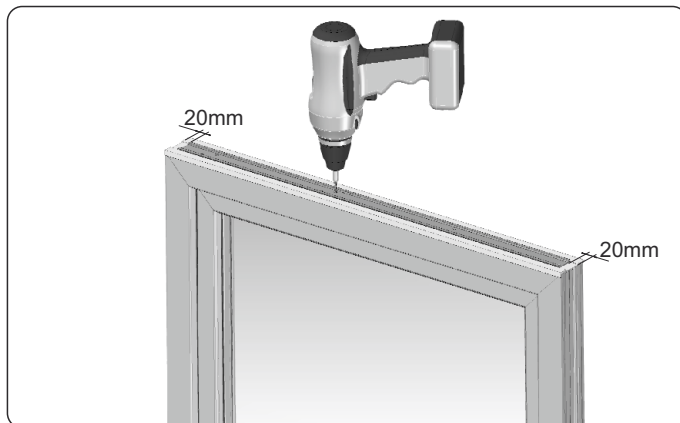
1. Before installing the adapter, it is recommended to attach the PURS STANDARD expanding tape onto the window frame (PORTOS does not provide this component in the set - tape available in the offer).



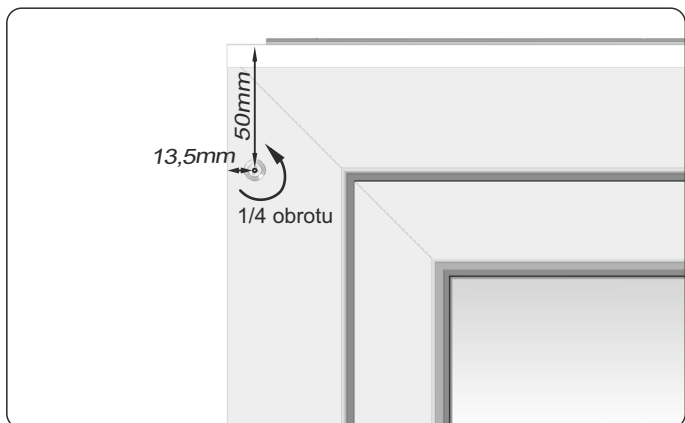
2. Apply the adaptation profile onto the window frame.



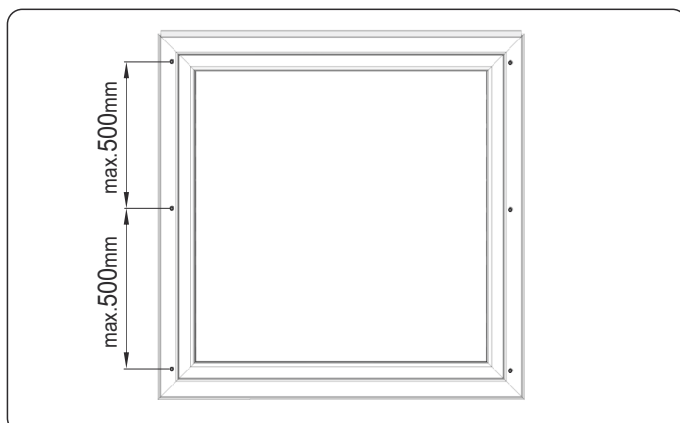
3. Slide the aluminium insert into the adaptation profile.



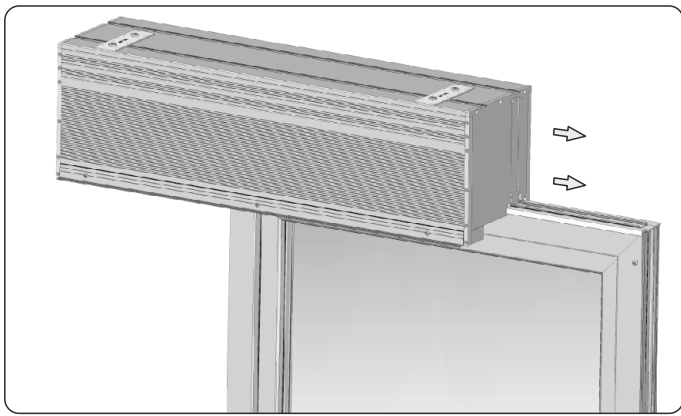
4. Fasten the adaptation profile with the aluminium insert with the use of screws in the designated holes on the profile aluminium insert in such a way that the ends of the aluminium insert are distant from each edge of the adaptation profile by 20 mm.



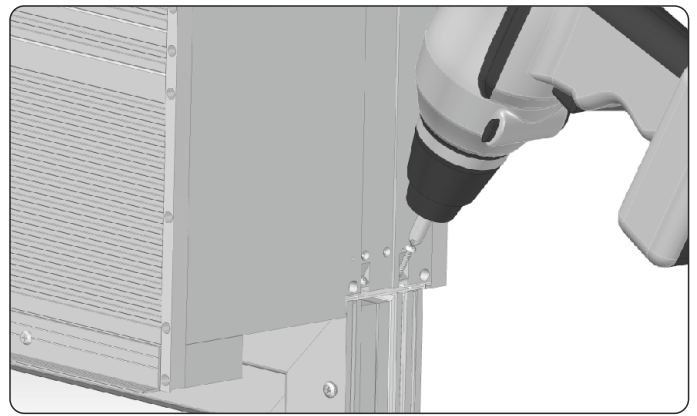
5. Determine the places where the fastening screws (nipples) should be tightened by measuring and marking the distances given above from the edges of the frame. Screw the fastening screws of the guides (nipples) in the marked place. After tightening, loosen the screw by 1/4 rotation, which will facilitate insertion of the guide and prevent its deformation.



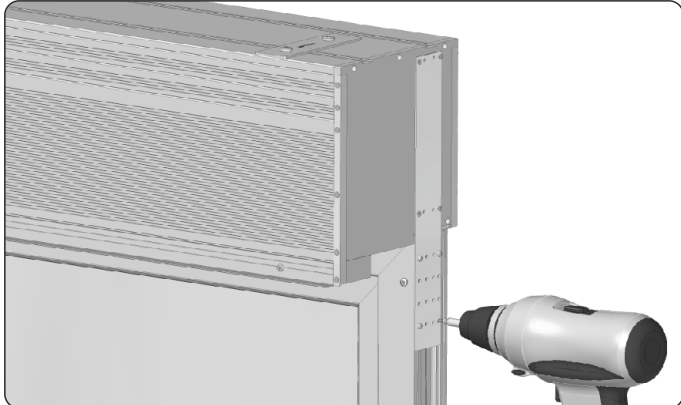
6. Fastening screws (nipples) are installed on average every 50 cm, but not less than 3 per side and 5 cm from the lower and upper edge of the window frame.



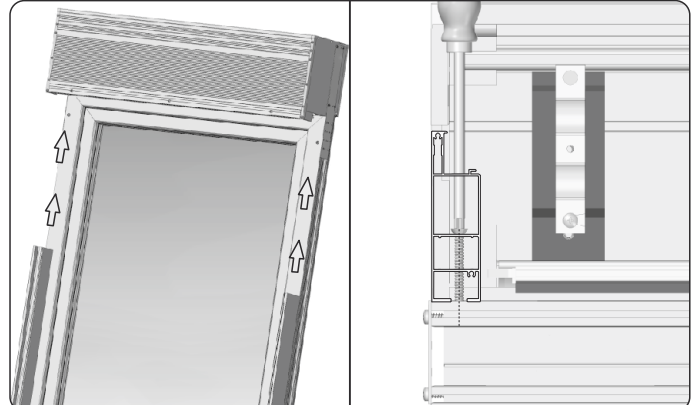
7. Attach and slide the box onto the properly screwed adapter to the very end of the window frame. Do not hit with a hammer. The side edges of the box must be flush with the side edges of the window.



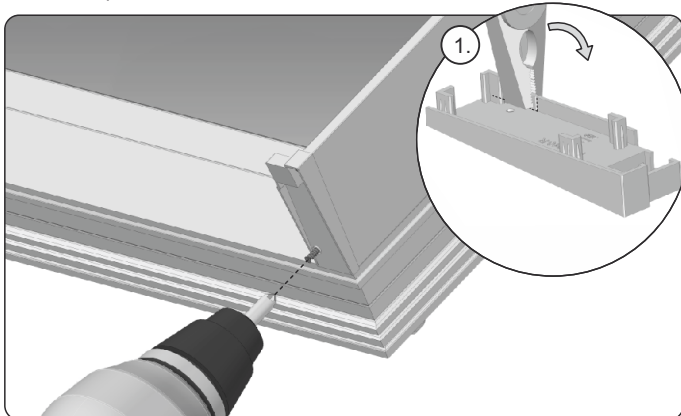
8. After sliding on the roller shutter, fasten the side screws starting from the outside of the roller shutter.



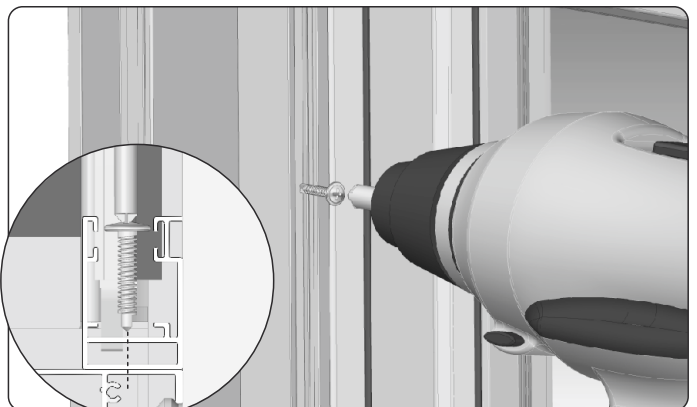
9. Screw the steel side handles by fastening them in the designated box holes with 3x6.5 mm screws (included in the set) and to the window frame.



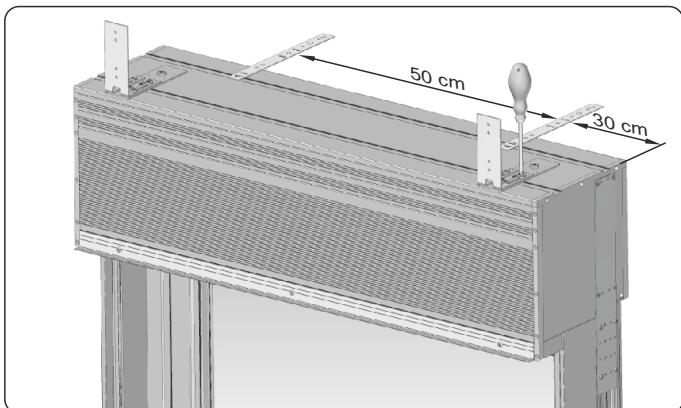
10. Slide the guide adapter onto the fastening screws (nipples) screwed earlier to the window frame, or optionally tighten with screws.



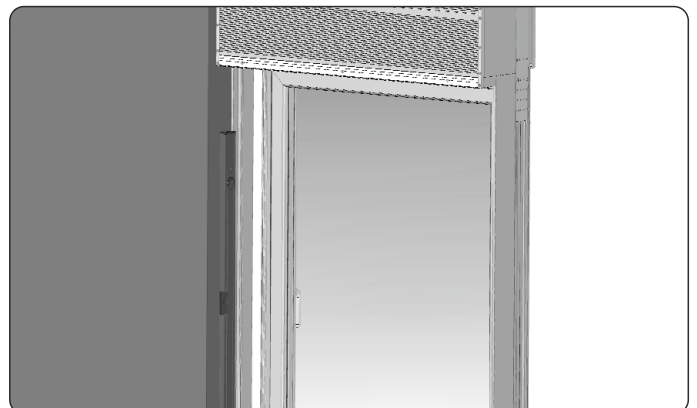
11. Place the bottom plugs onto the guide adapters and fasten them with the 3x16 screw included in the set. For the version with a mosquito net, break out the piece in the plugs before placing, as in Figure 1.



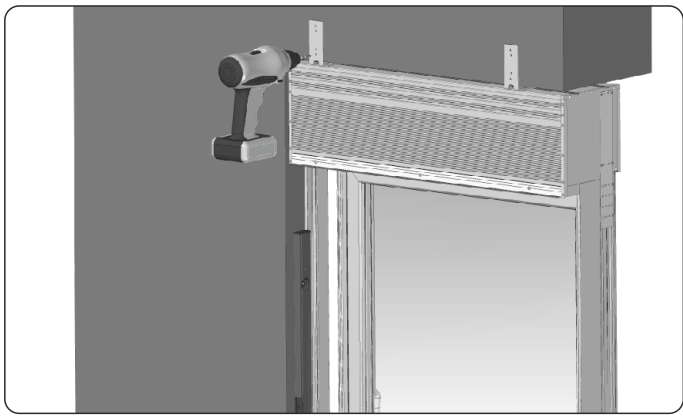
12. Then fasten the mosquito net guides with 4.2x13 screws (included in the set) to the guide adapter as shown in the figure above - applies to roller shutters with a mosquito net.



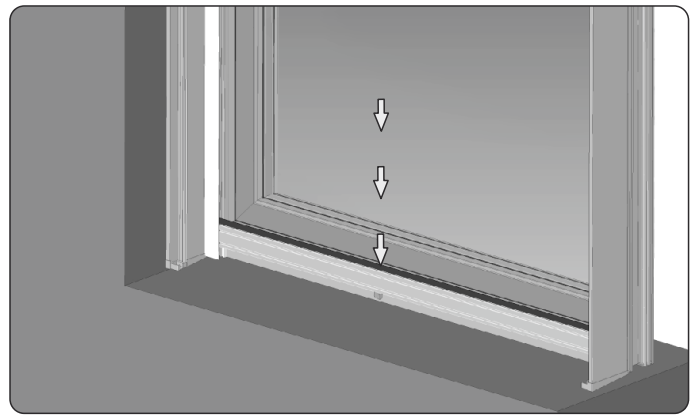
13. Install the upper anchoring at a distance of 30 cm from the edges of the roller shutter and connect both components of the lintel handles with the M5 screws included in the set, adjusting them as needed.



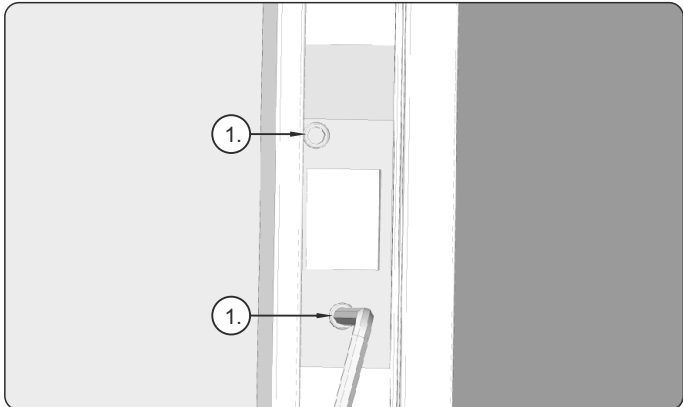
14. Install the complete set in the previously prepared recess in accordance with the installation rules.



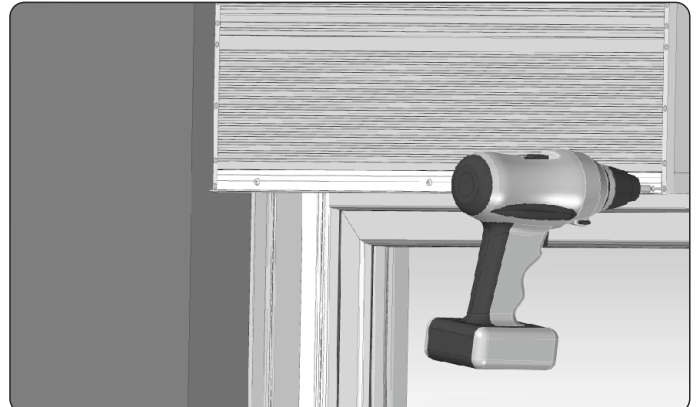
15. Before the final anchoring the roller shutter, its horizontal and vertical should be checked.



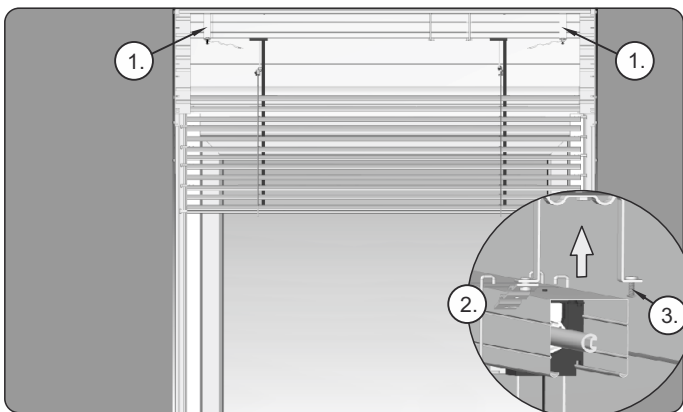
16. Lower the net in the guides to the bottom to check if the bottom lath of the mosquito net is properly locked.



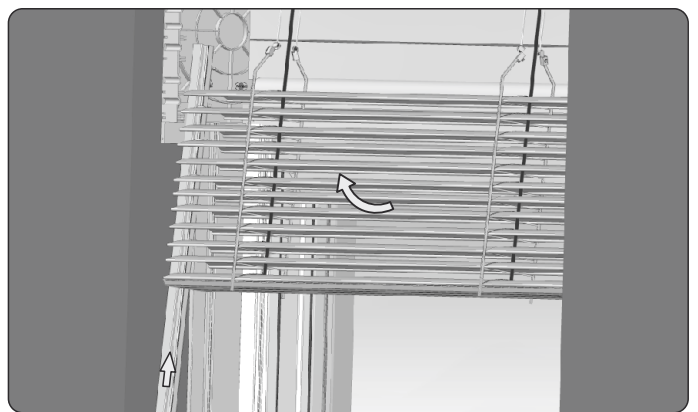
17. If necessary, adjust the height of the clips in the guides by loosening the screws (1) and then gently tightening.



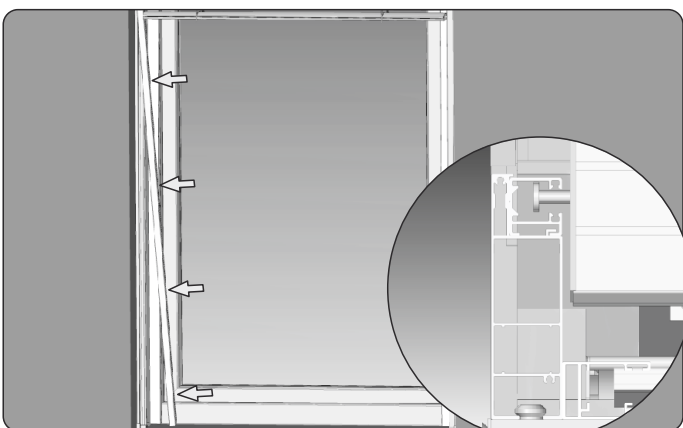
18. To facilitate the installation of the external blind package, unscrew the front inspection cover.



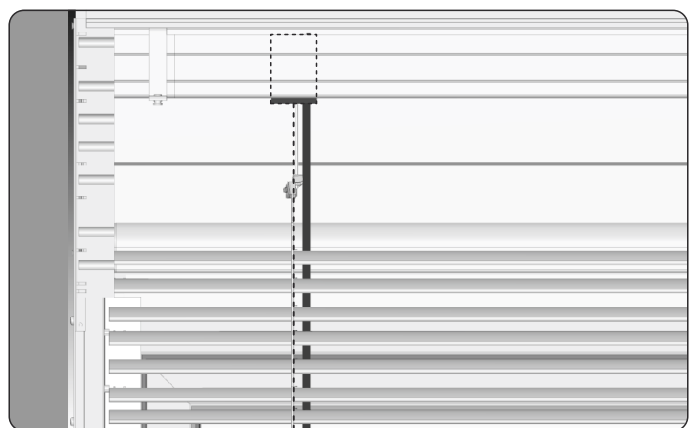
19. Lower the blind package slightly for easier access to screw it in the mounting handles (1), then slide the blind package rail into the handles as shown in Figure 2. Fasten the handles with screws (3).



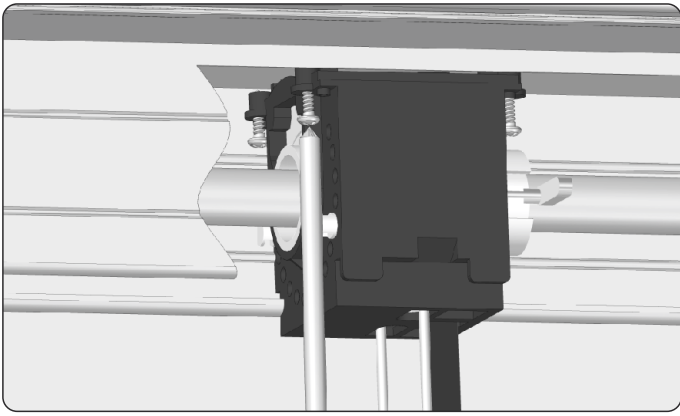
20. Gently tilt the package forward and slide in the guides from below.



21. Slide the guides into the adapter from the side.



22. Check that the cord with the tape is aligned vertically with the bearing in the top rail.



23. If the bearing is in the right place, it should be tightened.
If the tape is not placed vertically, move the bearing in the head rail so that the tape is placed properly.



24. Screw on the front inspection cover.



**OSTRZEŻENIE – POSTĘPOWANIE WEDŁUG NINIEJSZEJ
INSTRUKCJI JEST ISTOTNE DLA BEZPIECZEŃSTWA OSÓB.
ZACHOWAJ TĘ INSTRUKCJĘ.**



PORTOS TR7

spółka z ograniczoną odpowiedzialnością s. k.
ul. Złota 71
62-800 Kalisz
tel 62 768 40 11

E-mail: sekretariat@portosrolety.pl
www.portosrolety.pl



PN-EN 13659

Deklaracja właściwości użytkowych dostępna
na stronie www.portosrolety.pl

Poniedziałek-piątek, godz. 7.00-15.00

BUDOWA I MONTAŻ ROLET, ŻALUZJI:
tel. 62 768 40 63

SILNIKI, SYSTEMY STEROWANIA:
tel. kom. 669 756 161
tel. 62 768 40 46
tel. kom. 693 156 115
tel. 62 768 40 40

DZIAŁ REKLAMACJI (SERWISU):
tel. 62 768 40 45, 62 768 40 51, 62 768 40 32