

Roller blind

 **IRM4000**®

**TECHNICAL CATALOGUE**





## TABLE OF CONTENTS:

Features and benefits of RM4000 blinds	2
Cross-section and the list of elements	4
Elements of the cassette	12
Guides	22
Instruction of the assembly	27



## Features and assets of RM4000<sup>®</sup> roller blind

- universal cassette adjusted for C-type corner guides and glazing flat guides
- unique, eye-pleasing cassette shape
- all the elements of the cassette form a coherent and uniform whole
- one cassette for common fabrics and day and night fabrics
- the inclination of the upper surface of the cassette prevents excessive accumulation of dust on it
- mounting the day and night fabric at the bottom of the cassette increases its winding capacity, and the rubbing sound of fabric against fabric is eliminated
- easy assembly of the cassette with a tape, screws or hangers
- the rounded side cover increases the opening width of the window sash without damaging the wall
- complete protection against light reflections achieved by guides adjusted to the roller blind cassette

*RM4000 is a trademark of the PORTOS company.  
All photos and drawings contained in the catalogue are for reference only.  
The PORTOS company reserves the right to make changes.  
©2017 PORTOS. All rights reserved.*

# RM4000<sup>®</sup>

## LEGEND:



The indicative weight of the element (in kilogrammes).

The maximum length of a long element (given in metres)

The element used in C-type/ glazing system

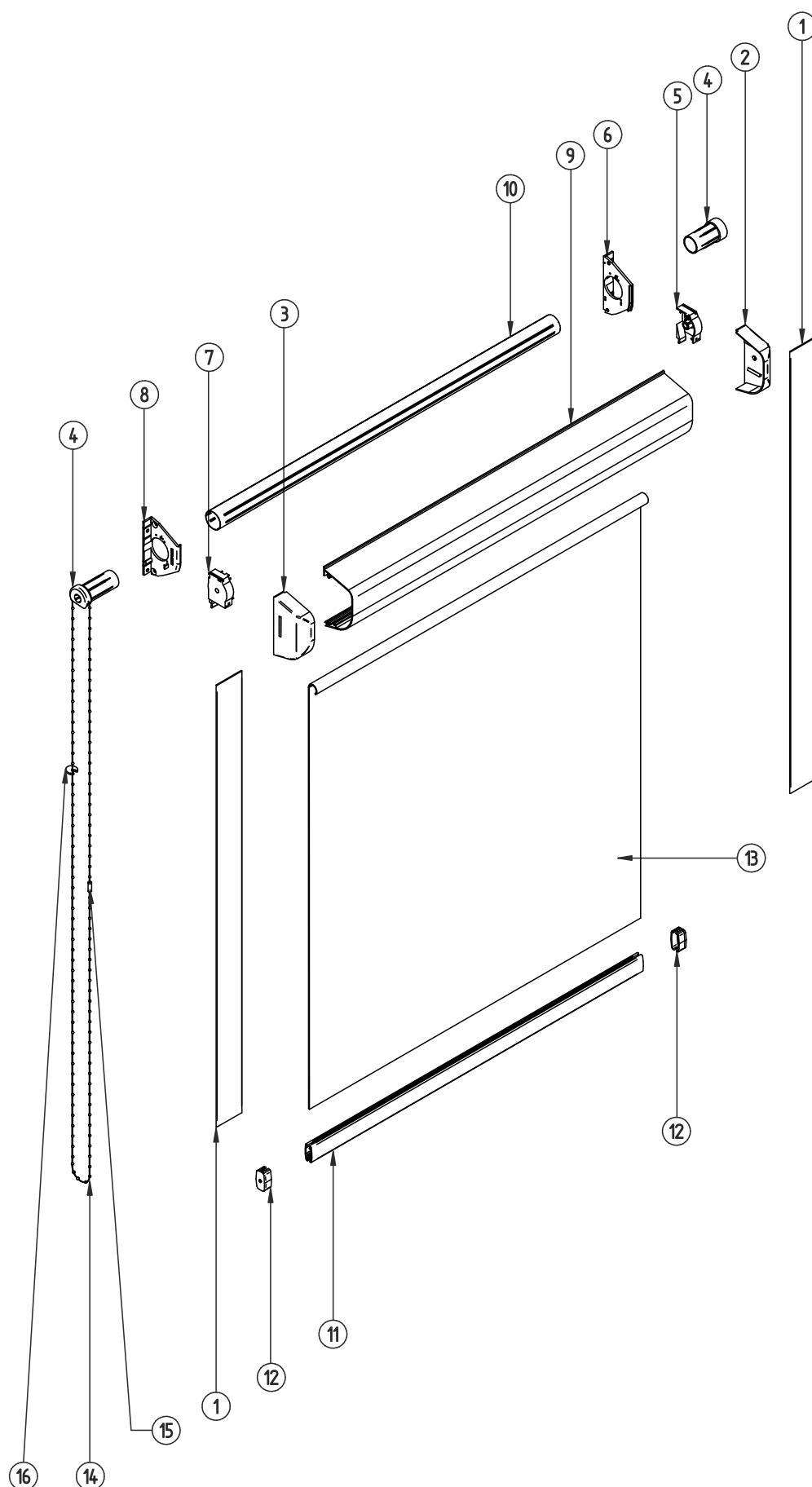
The material used to make an element (e.g. PVC, STEEL, PA6, etc.)

It contains no harmful heavy metals such as lead

The element with a veneering option.

## RM4000® System elements

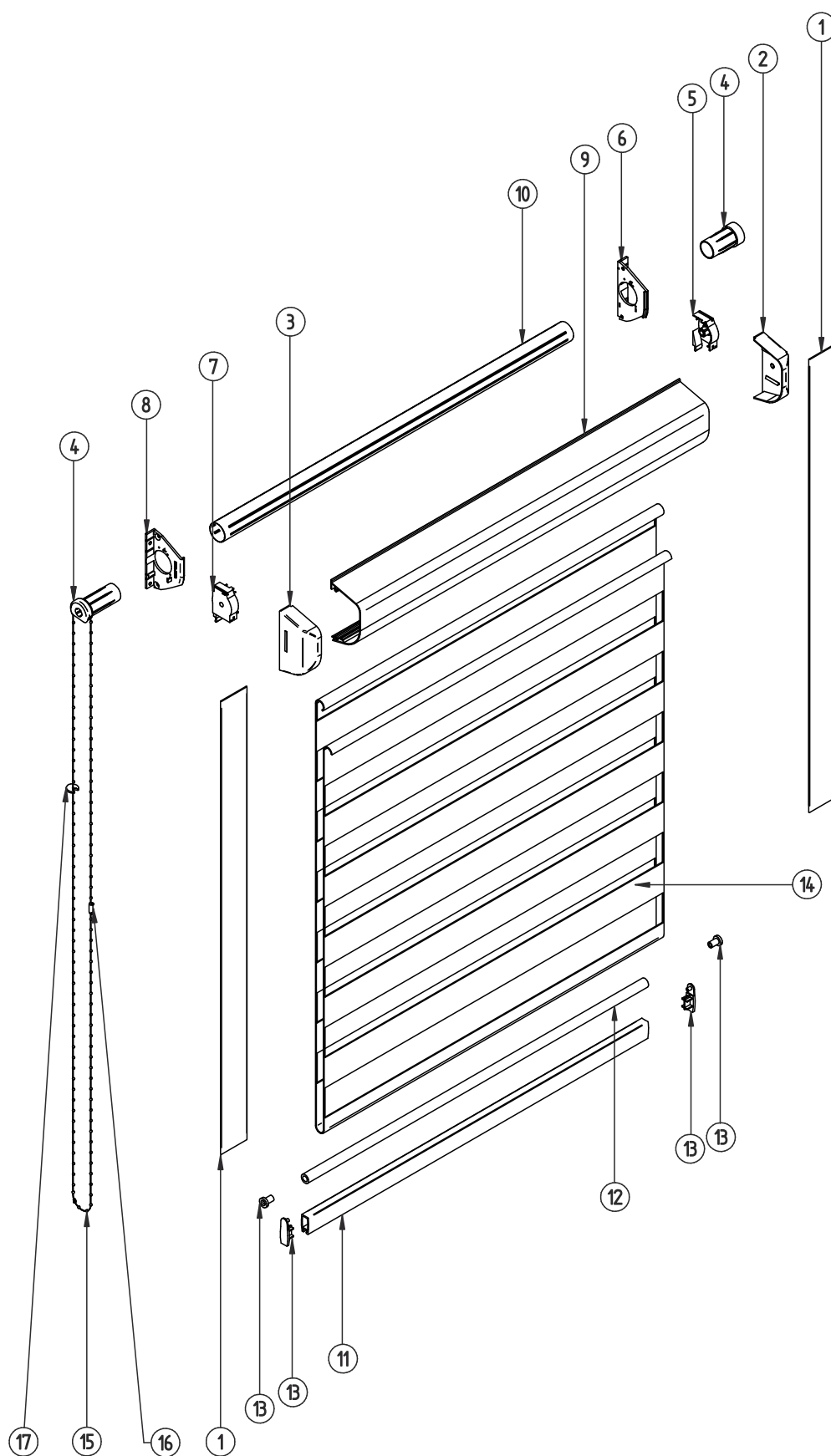
### Cross-section and the list of elements



## RM4000® flat guides, common fabric - cross-section and the list of elements

1	RK-07 ALU	ALU flat guide
	RK-07 PCV	PVC flat guide
2	OBP	Side cover full right
3	OBLO	Side cover with an opening left
4	FI 17 MECHANIZM	Self-locking mechanism
5	BWTP	Internal side rear right
6	BWPP	Internal side front right
7	BWTL	Internal side rear left
8	BWPL	Internal side front left
9	K-RM4000 ALU	Aluminium roller blind cassette RM4000
	K-RM4000 PCV	PVC roller blind cassette RM4000
10	RS-17-00	Steel pipe fi 17 mm with tape
11	RD-09-S	ALU drop
12	RD-ZAŚL.BELKI	Drop end cap
13		Fabric
14	RK-11	Small plastic ball chain
15	RK-12	Connecting clip for a small ball chain
16	RK-14 S	Chain lock

# RM4000® System elements Cross-section and the list of elements



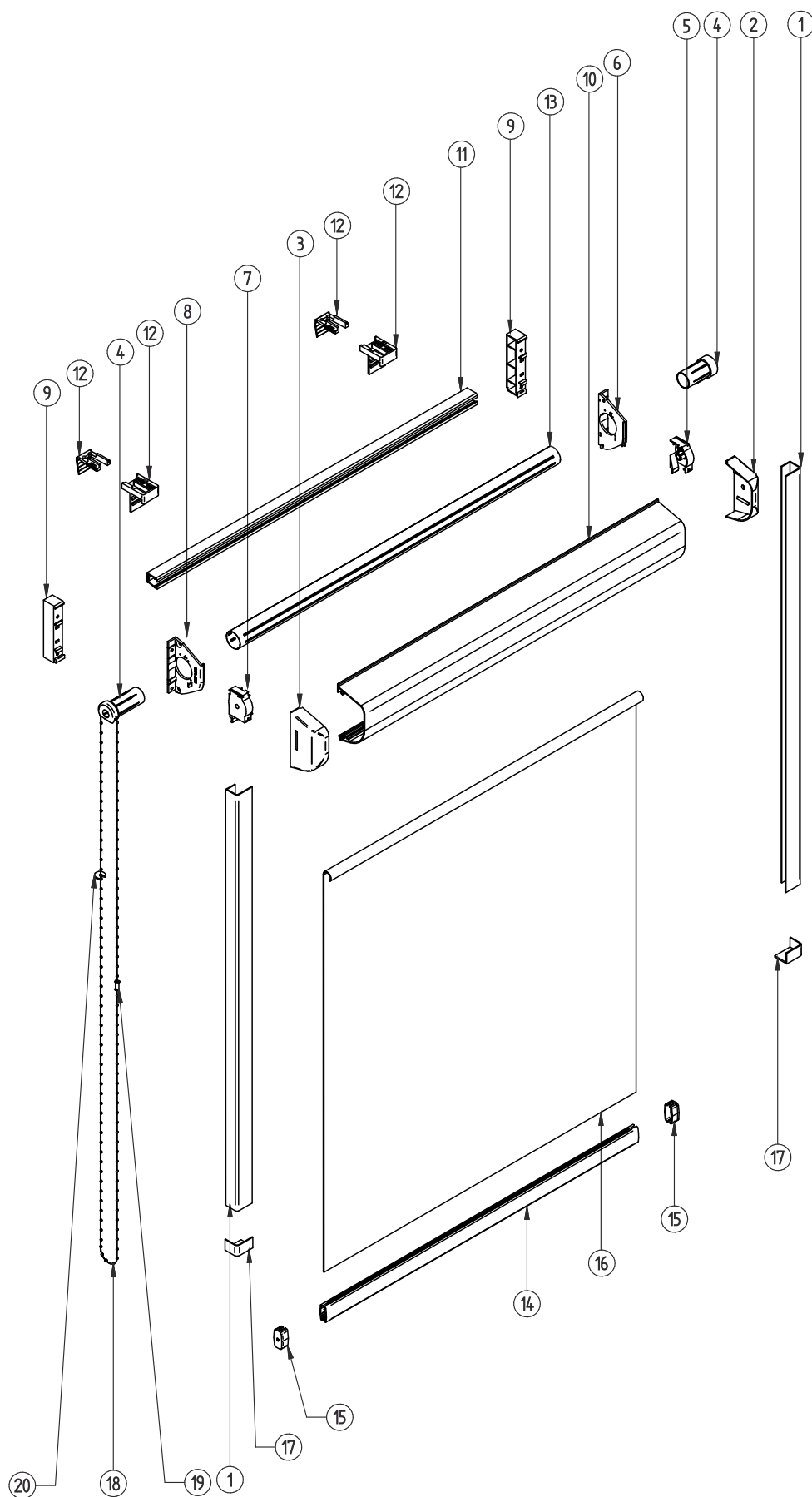


## RM4000® flat guides, day and night fabric - cross-section and the list of elements

1	RK-07 ALU	ALU flat guide
	RK-07 PCV	PVC flat guide
2	OBP	Side cover full right
3	OBLO	Side cover with an opening left
4	FI 17 MECHANIZM	Self-locking mechanism
5	BWTP	Internal side rear right
6	BWPP	Internal side front right
7	BWTL	Internal side rear left
8	BWPL	Internal side front left
9	K-RM4000 ALU	Aluminium roller blind cassette RM4000
	K-RM4000 PCV	PVC roller blind cassette RM4000
10	RS-17-00	Steel pipe fi 17 mm with tape
11	RDN 058 ALU	Drop for the "DAY AND NIGHT" roller blind
12	RDN 059 ALU	Drop pipe for the "DAY AND NIGHT" roller blind
13	RDN 057 T	Drop end cap for the "DAY AND NIGHT" roller blind
14		"DAY AND NIGHT" fabric
15	RK-11	Small plastic ball chain
16	RK-12	Connecting clip for a small ball chain
17	RK-14 S	Chain lock

# RM4000® System elements

## Cross-section and the list of elements

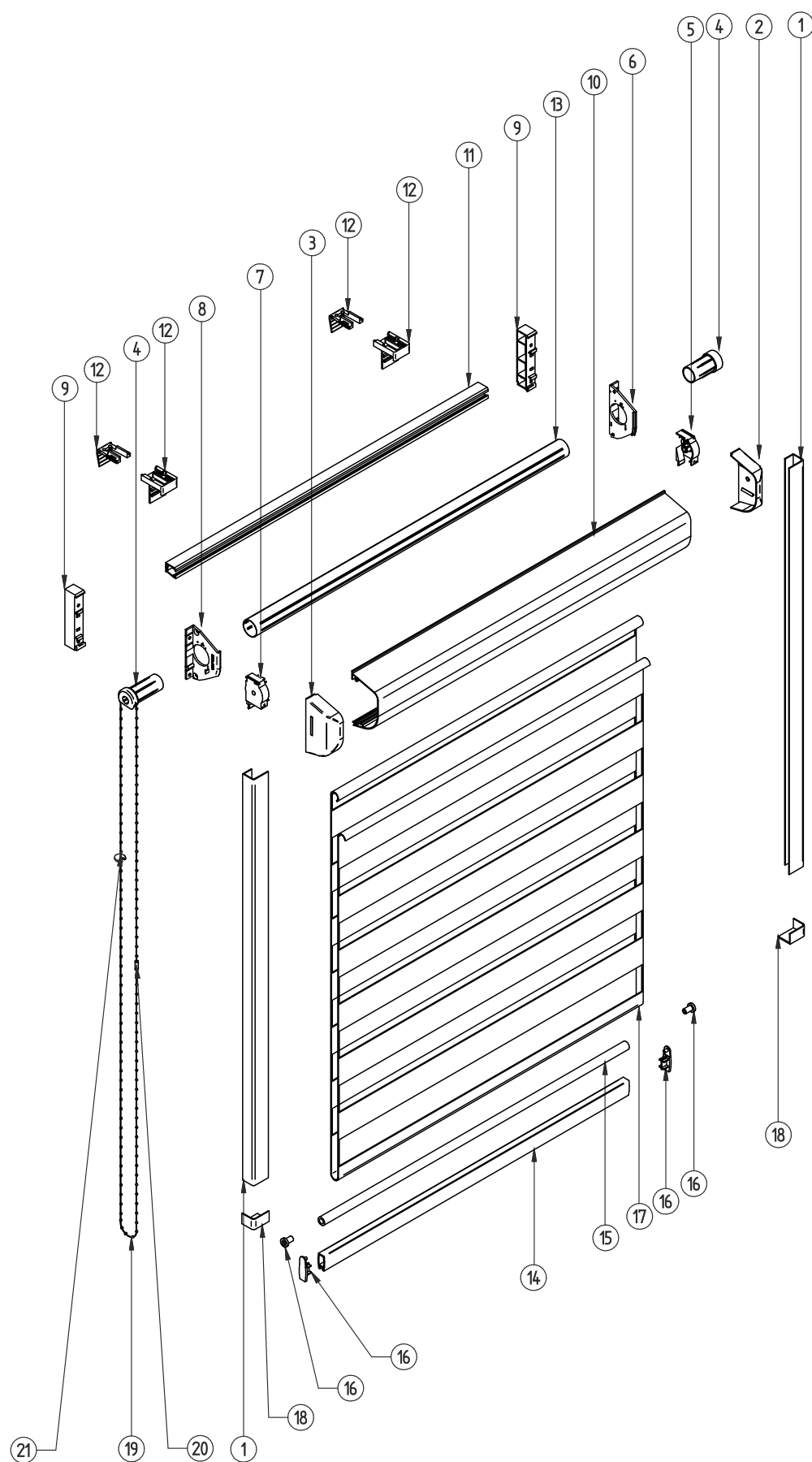


## RM4000® C-type guides, common fabric - cross-section and the list of elements

1	RL-05-S	ALU corner guide
	RL-05 PCV	PVC corner guide
2	OBP	Side cover full right
3	OBLO	Side cover with an opening left
4	FI 17 MECHANIZM	Self-locking mechanism
5	BWTP	Internal side rear right
6	BWPP	Internal side front right
7	BWTL	Internal side rear left
8	BWPL	Internal side front left
9	AB-RM4000 L/P	Side adapter left/right
10	K-RM4000 ALU	Aluminium roller blind cassette RM4000
	K-RM4000 PCV	PVC roller blind cassette RM4000
11	PPG ALU	Mounting profile top aluminium
	PPG PCV	Mounting profile top PVC
12	WS-RM4000	Roller blind hanger RM4000
13	RS-17-00	Steel pipe fi 17 mm with tape
14	RD-09-S	ALU drop
15	RD-ZAŚL.BELKI	Drop end cap
16		Fabric
17	RL-07-S	End cap of the corner guide
18	RK-11	Small plastic ball chain
19	RK-12	Connecting clip for a small ball chain
20	RK-14 S	Chain lock

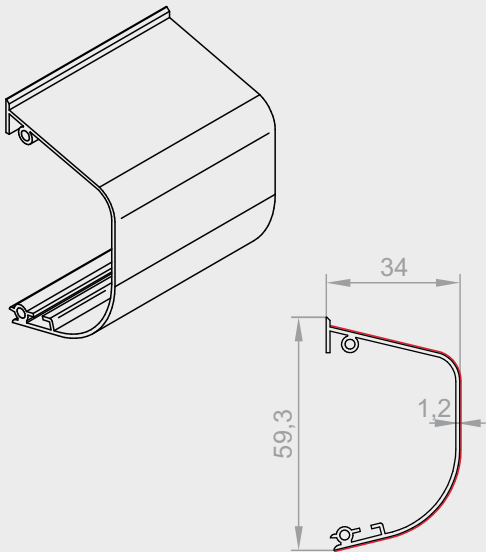
# RM4000® System elements

## Cross-section and the list of elements



## RM4000® C-type guides, day and night fabric - cross-section and the list of elements

1	RL-05-S	ALU corner guide
	RL-05 PCV	PVC corner guide
2	OBP	Side cover full right
3	OBLO	Side cover with an opening left
4	FI 17 MECHANIZM	Self-locking mechanism
5	BWTP	Internal side rear right
6	BWPP	Internal side front right
7	BWTL	Internal side rear left
8	BWPL	Internal side front left
9	AB-RM4000 L/P	Side adapter left/right
10	K-RM4000 ALU	Aluminium roller blind cassette RM4000
	K-RM4000 PCV	PVC roller blind cassette RM4000
11	PPG ALU	Mounting profile top aluminium
	PPG PCV	Mounting profile top PVC
12	WS-RM4000	Blind hanger RM4000
13	RS-17-00	Steel pipe fi 17 mm with tape
14	RDN 058 ALU	Drop for the "DAY AND NIGHT" roller blind
15	RDN 059 ALU	Drop pipe of the "DAY AND NIGHT" roller blind
16	RDN 057 T	Drop end cap of the "DAY AND NIGHT" roller blind
17		"DAY AND NIGHT" fabric
18	RL-07-S	End cap of the corner guide
19	RK-11	Small plastic ball chain
20	RK-12	Connecting clip for a small ball chain
21	RK-14 S	Chain lock



**K-RM4000-XX PCV**

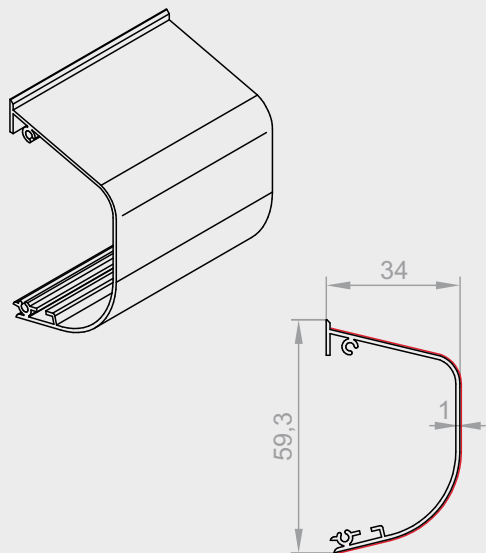
RM4000 roller blind PVC cassette  
Available in colours (XX):02 - white

Element available in the veneer:						
* 11 - palisander	12 - anthracite	22 - mahogany	30 - walnut	* 34 - bog oak	48 - golden oak	* 54 - winchester

\* - colour available on an individual order



Available soon



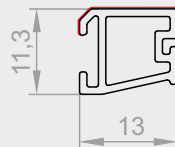
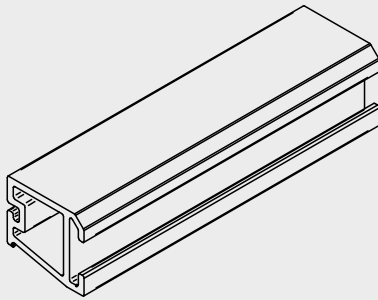
**K-RM4000-XX ALU**

Aluminium roller blind cassette RM4000  
Available in colours (XX):02 - white, 09 - light brown

Element available in the veneer:						
* 11 - palisander	12 - anthracite	22 - mahogany	30 - walnut	* 34 - bog oak	48 - golden oak	* 54 - winchester

\* - colour available on an individual order





### PPG-XX PCV

PVC mounting profile top  
Available in colours (XX):02 - white

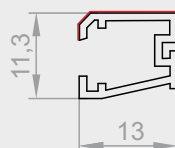
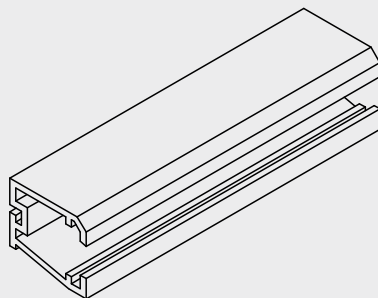
Element available in the veneer:

* 11 - palisander	12 - anthracite	22 - mahogany	30 - walnut	* 34 - bog oak	48 - golden oak	* 54 - winchester

\* - colour available on an individual order



Available soon



### PPG-XX ALU

Mounting profile top aluminium  
Available in colours (XX):02 - white, 09 - light brown

Element available in the veneer:

* 11 - palisander	12 - anthracite	22 - mahogany	30 - walnut	* 34 - bog oak	48 - golden oak	* 54 - winchester

\* - colour available on an individual order



## SET OF ACCESSORIES LEFT:

### PML-RM4000-XX

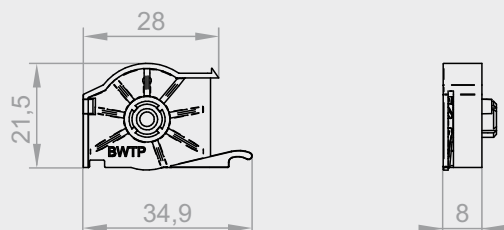
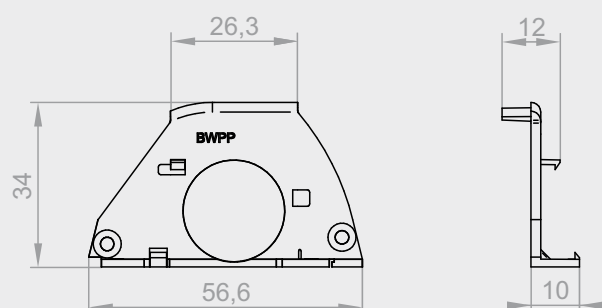
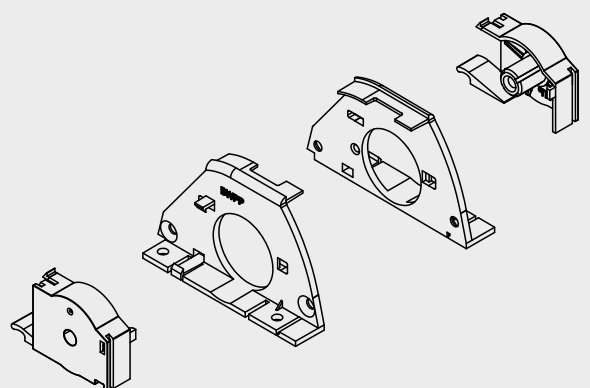
The set includes:

#### 1. BW-RM4000-XX

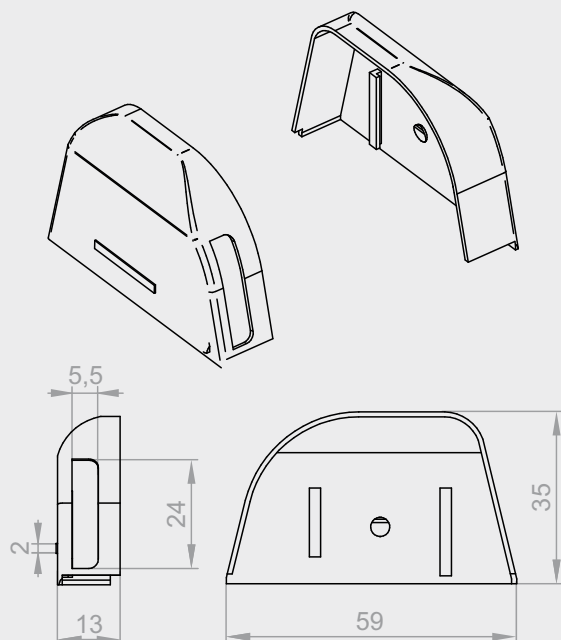
Internal side - complete

Available in colours (XX):

02 - white, 09 - light brown







## 2. **OBL-RM4000-XX**

Side cover left (left with an opening, right full)

Available in colours (XX):

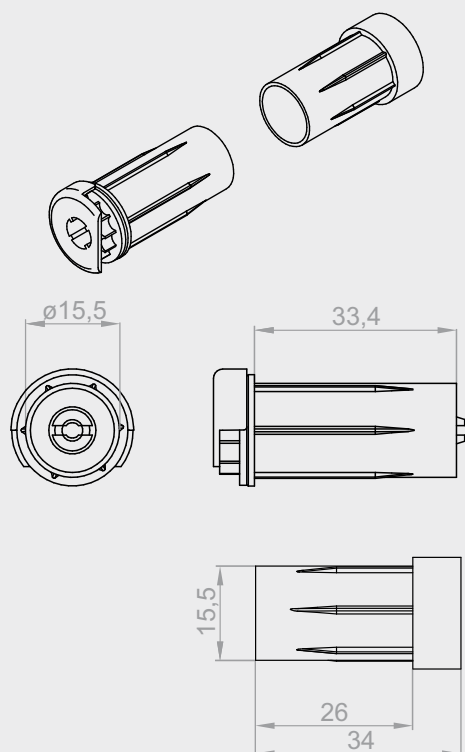
02-white, 08-dark brown, 09-light brown,  
22 - mahogany, 23 - anthracite, 30 - walnut,  
48 - golden oak, 54 - winchester

## **OBL-RM4000-XXD**

Side cover left (left with an opening, right full)

Available in decors (XXD):

22D - mahogany, 30D - walnut,  
48D - golden oak



## 3. **FI-17 XX MECHANISM**

Self-locking mechanism fi 17

Available in colours (XX):

02 - white, 09 - light brown



## SET OF ACCESSORIES RIGHT:

### PMP-RM4000-XX

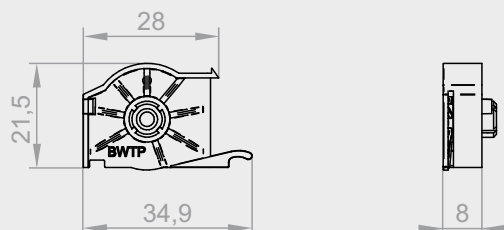
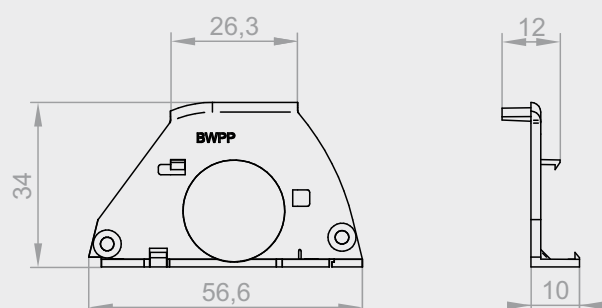
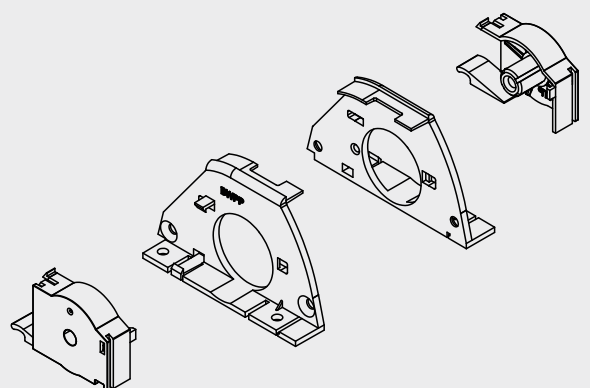
The set includes:

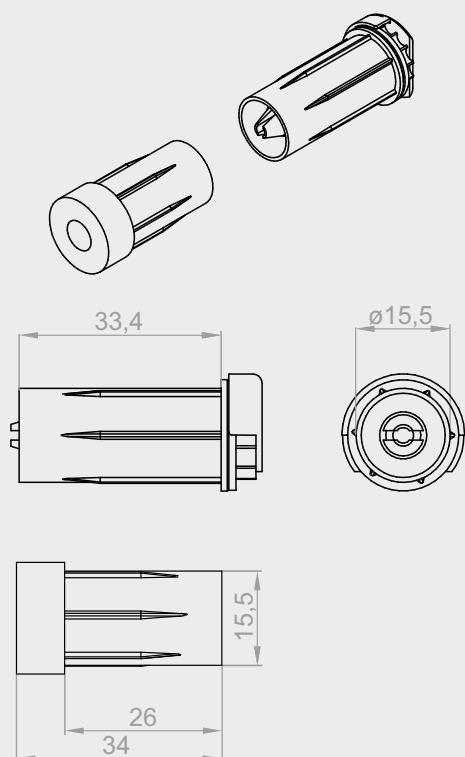
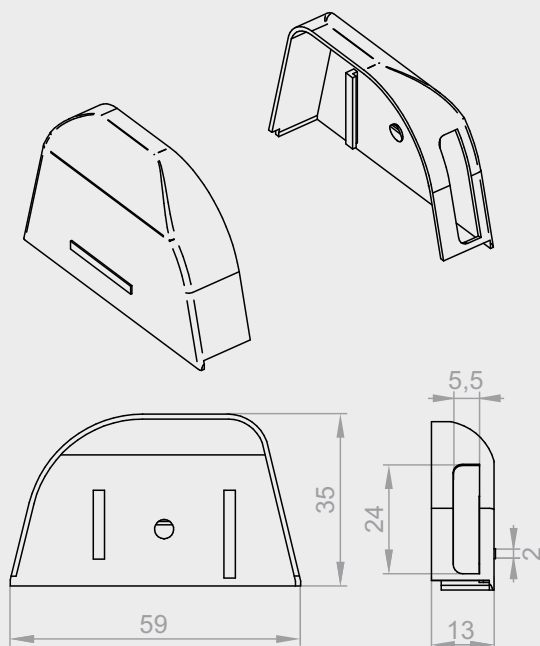
#### 1. BW-RM4000-XX

Internal side - complete

Available in colours (XX):

02 - white, 09 - light brown





## 2. **OBP-RM4000-XX**

Side cover right (right with an opening, left full)

Available in colours (XX):

02-white, 08-dark brown, 09-light brown,  
22 - mahogany, 23 - anthracite, 30 - walnut,  
34 - bog oak, 48 - golden oak, 54 - winchester

## **OBP-RM4000-XXD**

Side cover right (right with an opening, left full)

Available in decors (XXD):

22D - mahogany, 30D - walnut,  
48D - golden oak



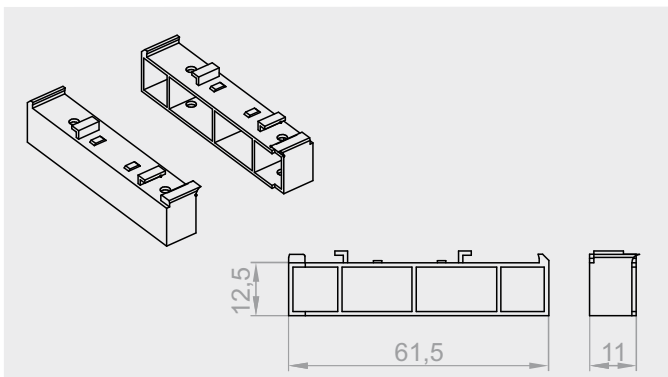
## 3. **FI-17 XX MECHANIZM**

Self-locking mechanism fi 17

Available in colours (XX):

02 - white, 09 - light brown



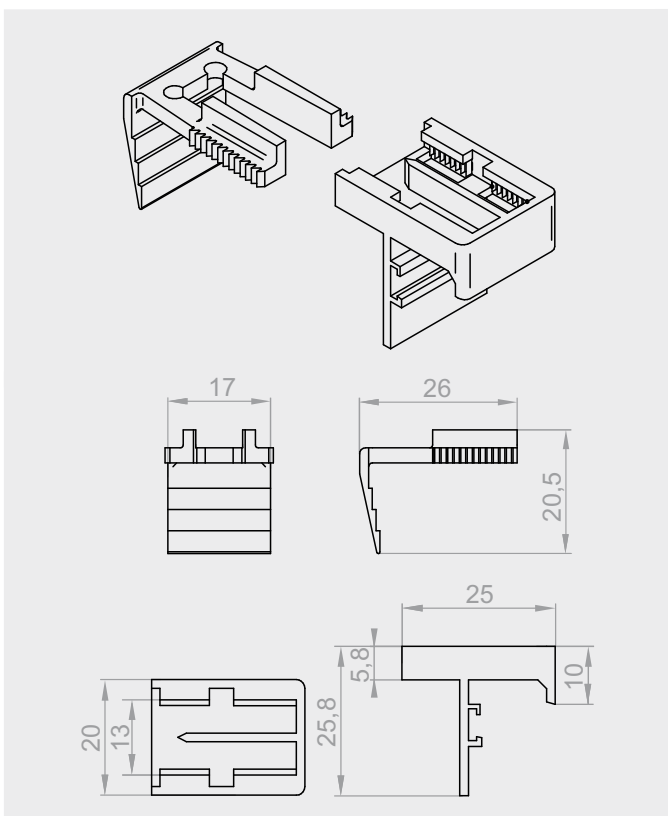


### **AB-RM4000-XX**

Side adapter left and right  
Available in colours (XX): 02 - white, 08 - dark brown  
09 - light brown, 22 - mahogany, 23 - anthracite,  
30 - walnut, 48 - golden oak, 54 - winchester

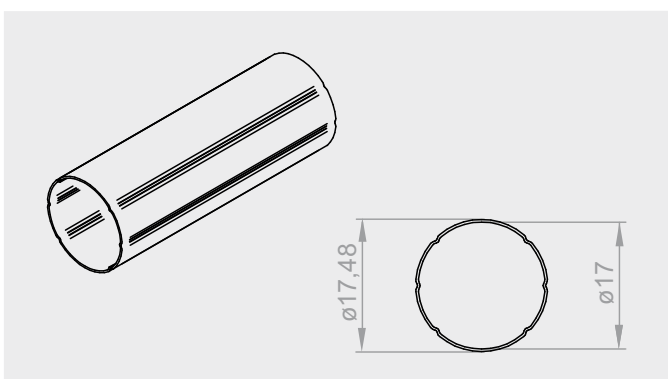
### **AB-RM4000-XXD**

Adapter boku lewy i prawy  
Dostępny w dekorach (XXD):  
22D - mahoń, 30D - orzech,  
48D - złoty dąb



### **WS-RM4000-XX**

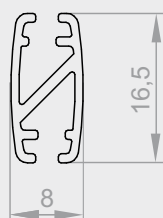
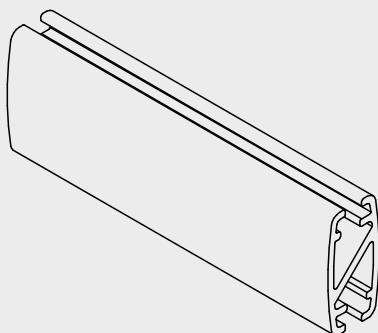
Roller blind hanger RM4000  
Available in colours (XX): 02 - white,  
09 - light brown, 23 - anthracite, 30 - walnut,  
48 - golden oak, 54 - winchester



### **RS-17-00**

Steel pipe fi 17 mm with tape





### RD-09-XX-S

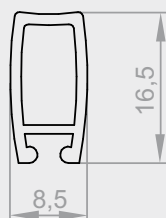
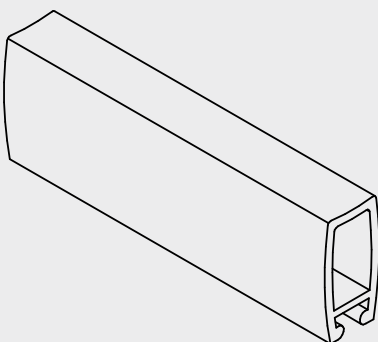
Aluminium drop

Available in colours (XX):02 - white, 09 - light brown

Element available in the veneer:

* 11 - palisander	12 - anthracite	22 - mahogany	30 - walnut	* 34 - bog oak	48 - golden oak	* 54 - winchester

\* - colour available on an individual order



### RDN 058 ALU XX

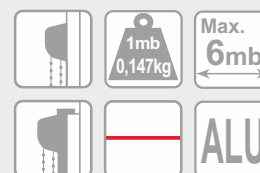
Drop for the day and night roller blind

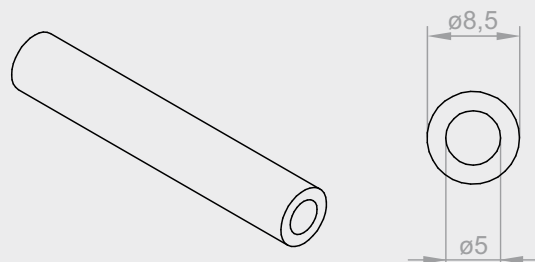
Available in colours (XX):02 - white, 09 - light brown

Element available in the veneer:

* 11 - palisander	12 - anthracite	22 - mahogany	30 - walnut	* 34 - bog oak	48 - golden oak	* 54 - winchester

\* - colour available on an individual order

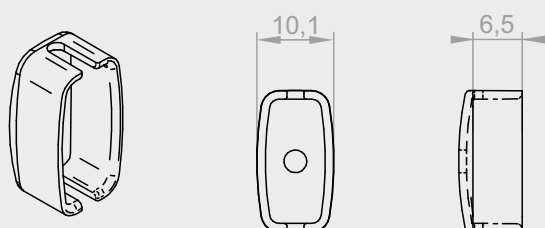
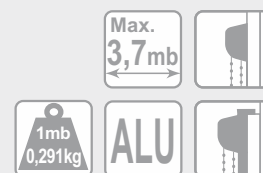




### **RDN 059 ALU XX**

Drop pipe for day and night roller blinds

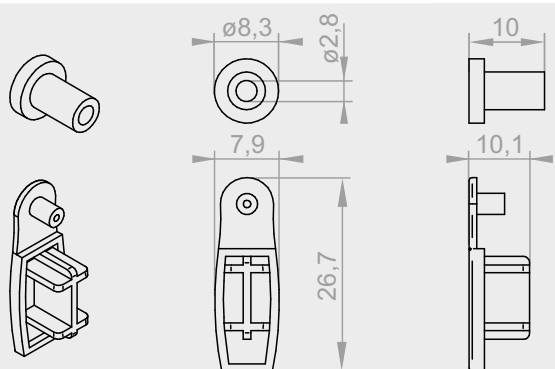
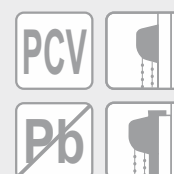
Available in colours (XX):02 - white, 09 - light brown



### **RD-XX ZAŚL.BELKI**

Drop end cap

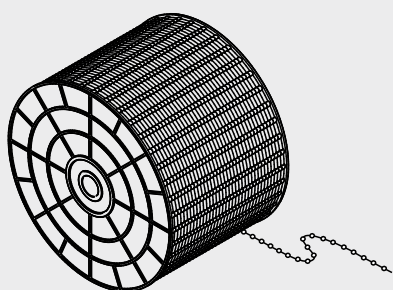
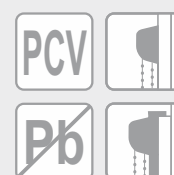
Available in colours (XX):02 - white, 08 - dark brown, 09 - light brown, 23 - anthracite, 48 - golden oak



### **RDN 057 T XX**

Drop end cap for day and night roller blind

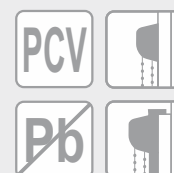
Available in colours (XX):02 - white, 09 - light brown

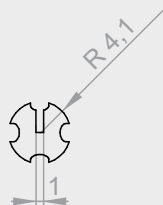
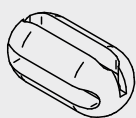


### **RK-11-XX**

Small plastic ball chain

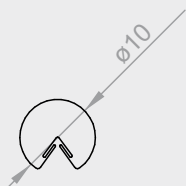
Available in colours (XX):02 - white, 08 - dark brown, 09 - light brown, 23 - anthracite





### **RK-12-XX**

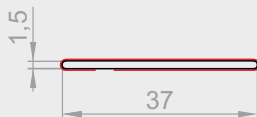
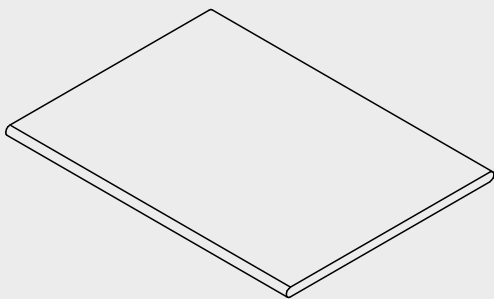
Connecting clip for a small ball chain  
Available in colours (XX): 00 - transparent,  
02 - white



### **RK-14-XX S**

Chain lock  
Available in colours (XX): 00 - transparent,  
02 - white, 08 - dark brown



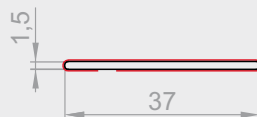
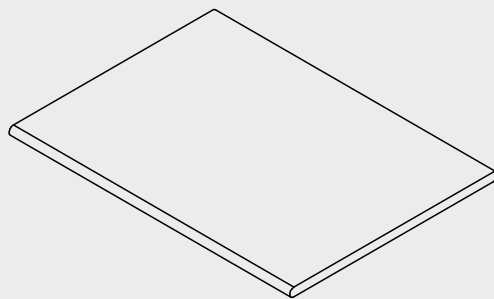


**RK-07-XX PCV**

PVC flat guide 37 mm  
Available in colours (XX):02 – white

Element available in the veneer:						
* 11 - palisander	12 - anthracite	22 - mahogany	30 - walnut	* 34 - bog oak	48 - golden oak	* 54 - winchester

\* - colour available on an individual order

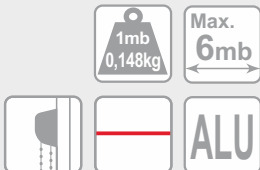


**RK-07-XX-ALU**

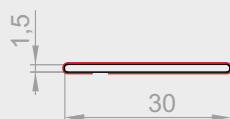
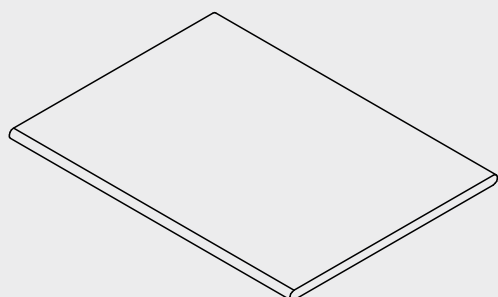
ALU flat guide 37 mm  
Available in colours (XX):02 - white, 09 - light brown

Element available in the veneer:						
* 11 - palisander	12 - anthracite	22 - mahogany	30 - walnut	* 34 - bog oak	48 - golden oak	* 54 - winchester

\* - colour available on an individual order







## RK-06-XX ALU

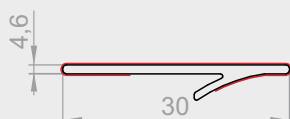
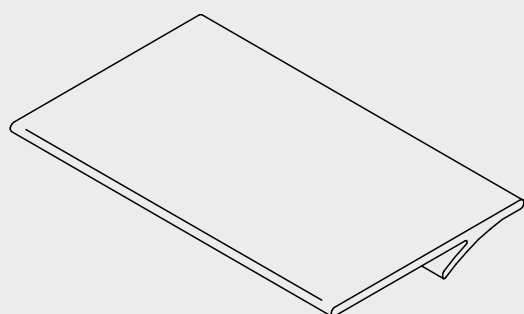
ALU flat guide 30 mm

Available in colours (XX):02 - white, 09 - light brown

Element available in the veneer:

* 11 - palisander	12 - anthracite	22 - mahogany	30 - walnut	* 34 - bog oak	48 - golden oak	* 54 - winchester

\* - colour available on an individual order



## RK 09-XX ALU P

ALU guide 30 mm with wedge

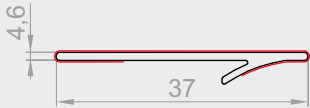
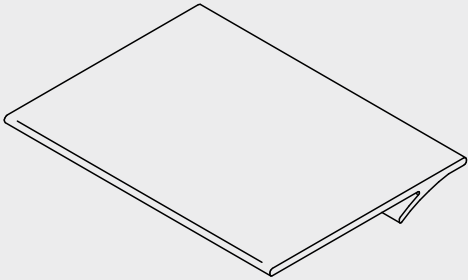
Available in colours (XX):02 - white, 09 - light brown

Element dostępny w okleinie:

* 11 - palisander	12 - anthracite	22 - mahogany	30 - walnut	* 34 - bog oak	48 - golden oak	* 54 - winchester

\* - colour available on an individual order



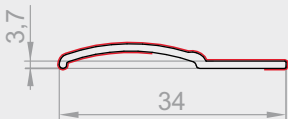
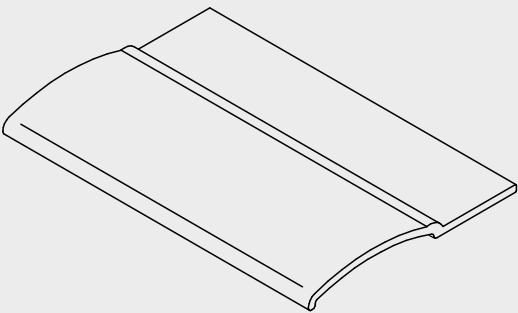
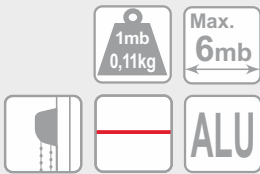


**RK 10-XX ALU P**

ALU guide 37 mm with wedge  
Available in colours (XX):02 - white, 09 - light brown

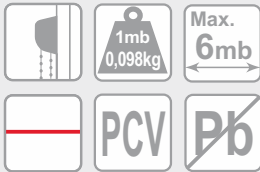
Element available in the veneer:						
* 11 - palisander	12 - anthracite	22 - mahogany	30 - walnut	* 34 - bog oak	48 - golden oak	* 54 - winchester

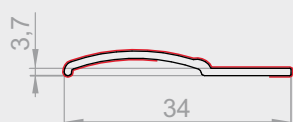
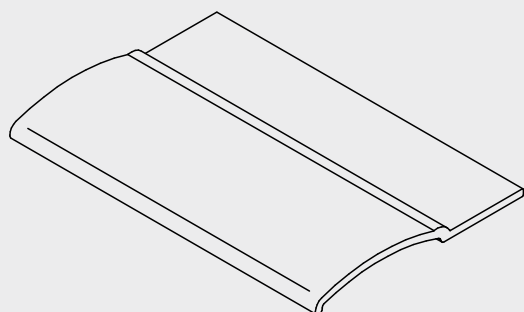
\* - colour available on an individual order



**RK-08-XX PCV N**

PVC semi-circular guide 34 mm  
Available in colours (XX):02 - white





### **RK-08-XX ALU**

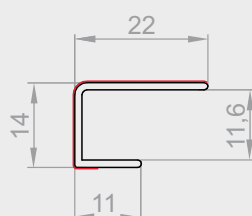
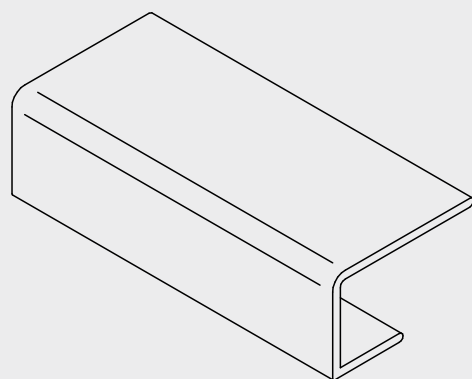
ALU semi-circular guide 34 mm

Available in colours (XX):02 - white, 09 - light brown

Element available in the veneer:

* 11 - palisander	12 - anthracite	22 - mahoni	30 - walnut	* 34 - bog oak	48 - golden oak	* 54 - winchester

\* - colour available on an individual order



### **RL-05-XX PCV**

PVC corner guide

Available in colours (XX):02 - white

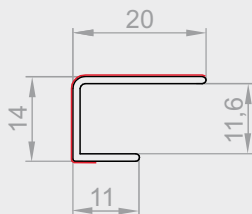
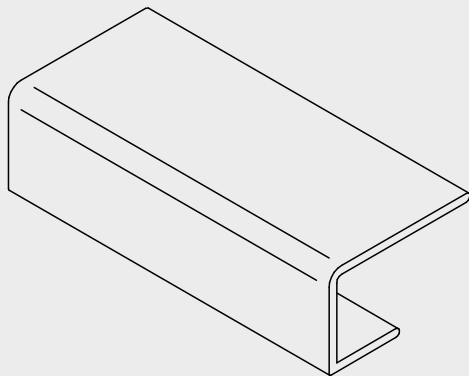
Element available in the veneer:

* 11 - palisander	12 - anthracite	22 - mahogany	30 - walnut	* 34 - bog oak	48 - golden oak	* 54 - winchester

\* - colour available on an individual order



Available soon



**RL-05-XX-S**

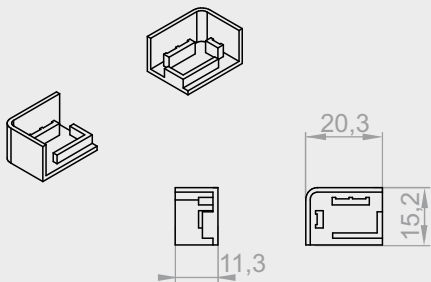
ALU corner guide  
Available in colours (XX):02 - white, 09 - light brown

Element available in the veneer:						
* 11 - palisander	12 - anthracite	22 - mahogany	30 - walnut	* 34 - bog oak	48 - golden oak	* 54 - winchester

\* - colour available on an individual order



While stocks last.



**RL-07-XX**

End cap of the corner guide  
Available in colours (XX):02 - white, 08 - dark brown, 09 - light brown, 48 - golden oak

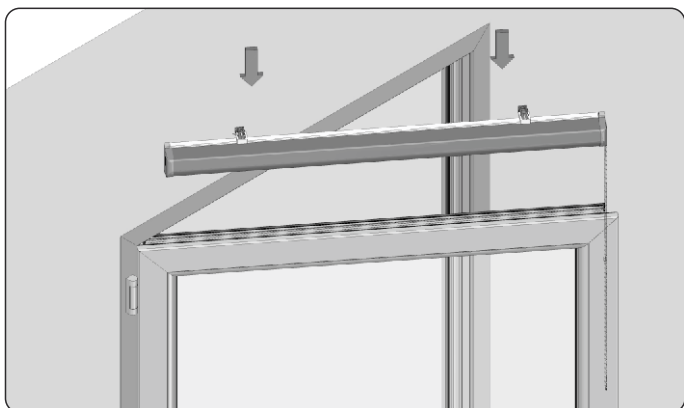


While stocks last

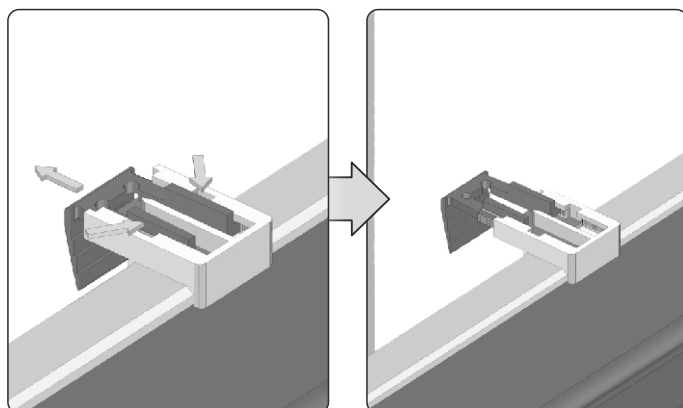
***INSTRUCTION OF THE  
ASSEMBLY OF ROLLER BLIND  
RM4000®***

**Before starting installation of RM4000 roller blind, please read the following instructions.**  
Any modifications or changes to the design of the blind can only be made after consultation with the manufacturer.  
**Directly before assembly, unpack the roller blind and check if there are all elements necessary for its assembly.**

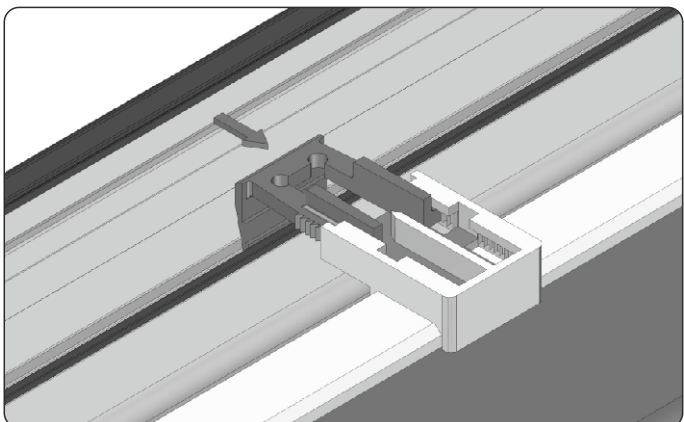
## **C-TYPE SYSTEM**



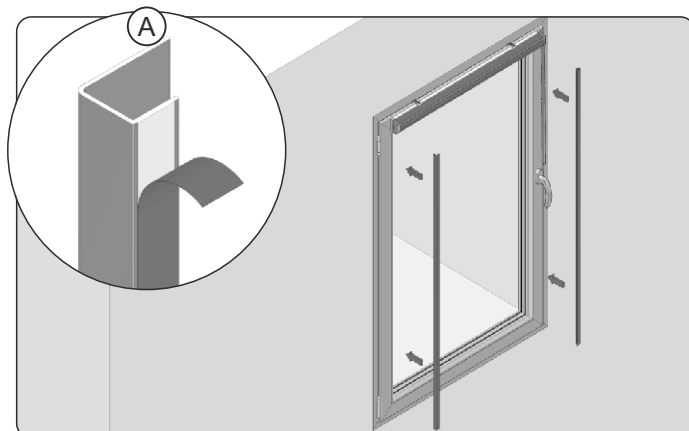
1. Before assembly of the cassette, the place of assembly should be degreased and the window sash opened.



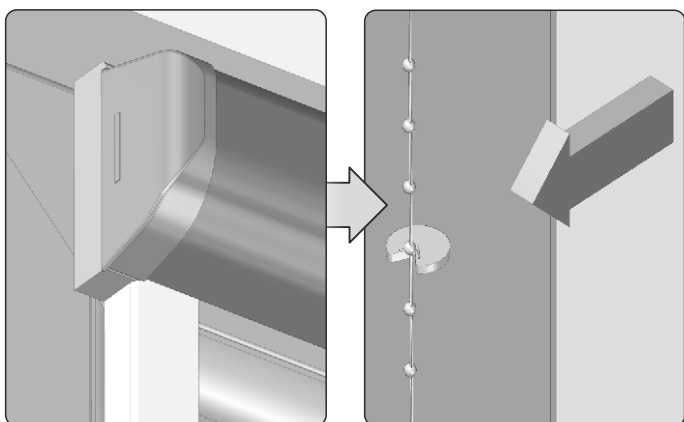
2. To increase the distance in the hanger, squeeze its two arms to make it easier to mount the cassette to the window sash.



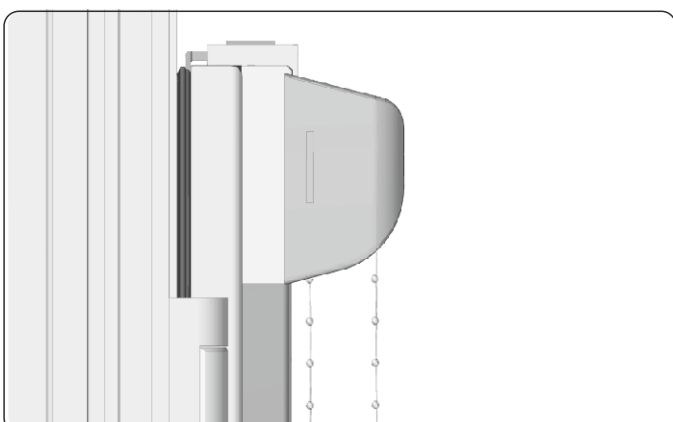
3. After mounting the cassette, insert the hanger as shown in the picture, so the roller blind cassette is immobilised.



4. Remove the protective foil (A) and affix the guides to the window sash...

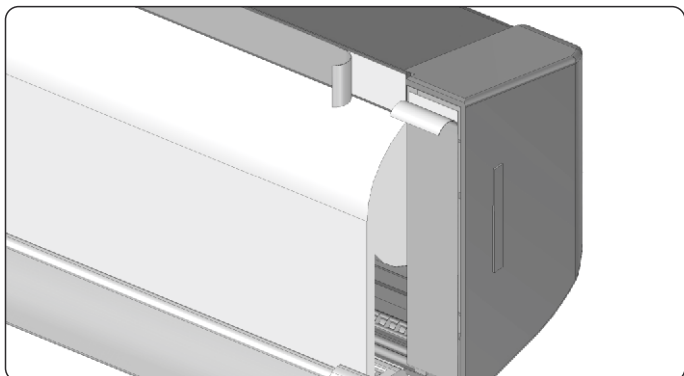


... in such a way that its upper part is adjacent to the cassette. Put a lock on the chain in such a place so that the material can be completely unfolded.

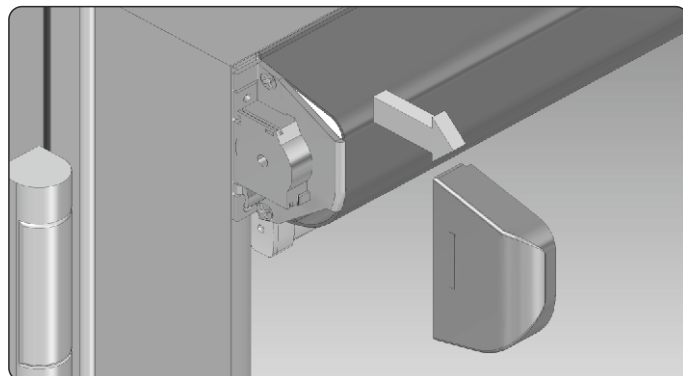


5. View of the mounted RM4000 roller blind in the C-type system.

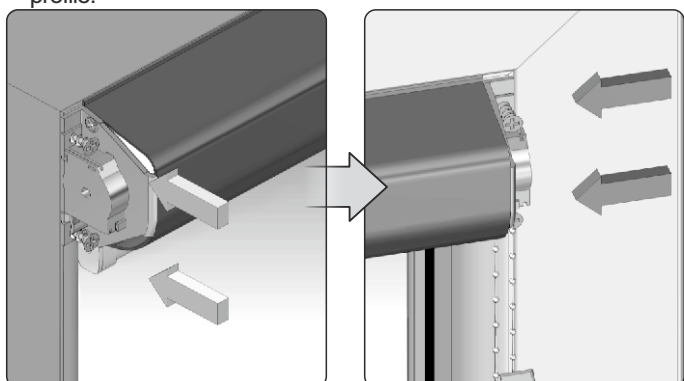
## GLAZING SYSTEM



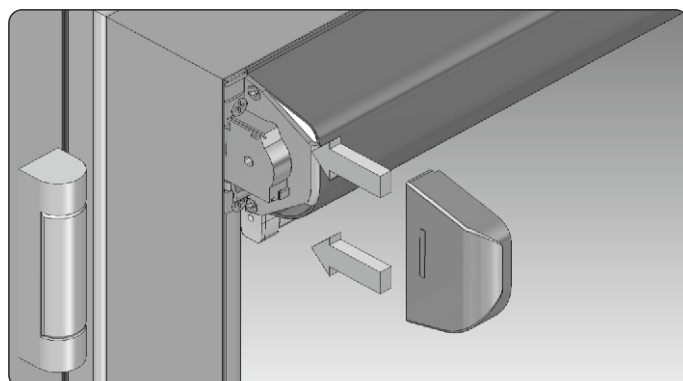
1. Remove the protective foil, then affix the cassette to the glazing profile.



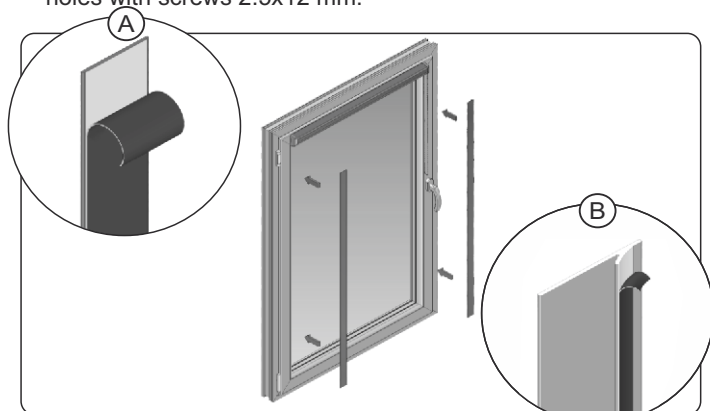
2. Slide the side casing out.



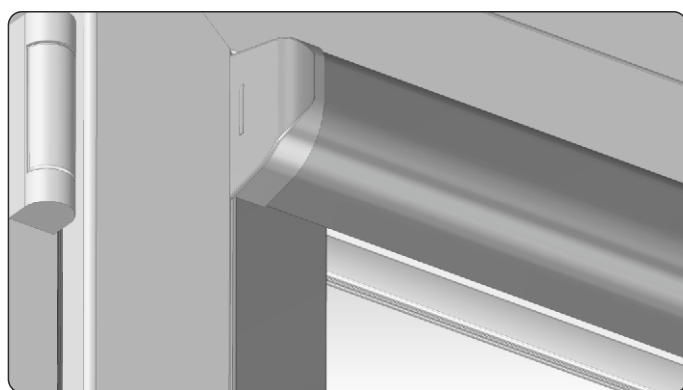
3. Fasten the cassette to the glazing profile through the mounting holes with screws 2.5x12 mm.



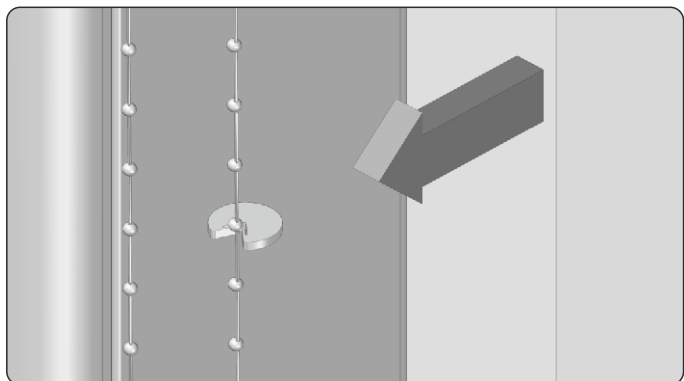
4. After screwing the cassette, slide the side casing on.



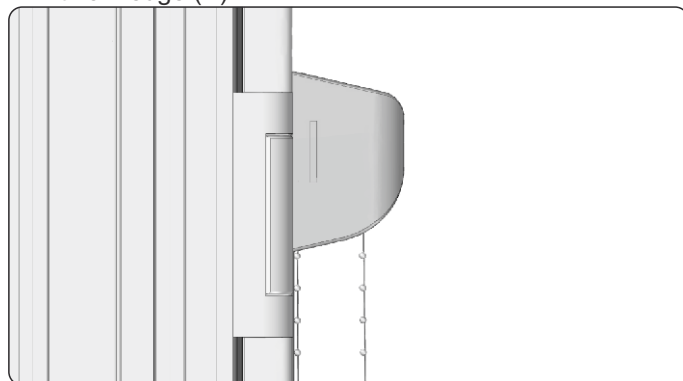
5. Remove the protective foil (A) and affix the guides to the window sash...



... in such a way that its upper part is adjacent to the cassette. If the glazing profile is rounded, use a guide with a wedge (B).



6. Put a lock on the chain in such a place so that the material can be completely unfolded.



7. View of the mounted RM4000 roller blind in the glazing system.

